

"HURRAH FOR YOUTH"



"Say It With Music"

"Entrance and March of the Peers"

*Anita Bertken
Juni 3
Juni 6
40*



ANITA BERTKEN

President

GENERAL

Numeral, Letter, Sweater
Star

C. S. F. Play '39

Band 3 years

Annual Staff '40

Pres. Junior Class 1 semester

Pres. Senior Class 2 semesters

Member of Hon. Society 2 semesters

Myrtle Babcock



MYRTLE BABCOCK

Vice-President

COMMERCIAL

Vice President

Senior Class '39 '40

Vice President Jr.

Soph. Treas.

Senior Play '40

*yo a brother
who is ok
& Kathie*



KATHLEEN SCHOTKY

Secretary

ACADEMIC

Transfer '39

Secy Senior Class 2 semesters

Senior Play '40

Play Tech. '40

Sen. Com. '40



RUTH DYER

Treasurer

COMMERCIAL

Class Com. '37 '38 '39 '40

Glee Club '37 '38 '39 '40

Candy Salesman '39

Senior Play '40

Treas. Senior Class 2 semesters

Member Honor Society

Ruth Dyer

HISTORY

The class of '40! That's us—Sons of Mariposa. The most respected class in school.

A year of fun and good times greeted us as we entered our last year at good old M. H. S. Our night party and the annual Senior Play, "June Mad", were two of the outstanding events during the two semesters. Following was the Senior Dress-Up Day. The Senior Ditch Day was held in Fresno, where the entire class had a swell time. The Junior-Senior Banquet came next, presenting an opportunity for the girls to wear their formals and the boys to strut their stuff. And finally came Baccalaureate Services and graduation, the fitting exit for a great class.

hash **CITIZENSHIP AWARD**

TEMPLE SCHLAGETER

DRAMA AWARD

JIM PHILLIPS

No Picture for:

Jessie **DAN BRANSON and EMIL JENSEN**

Advisors

MISS NASH

MR. LANGLO

*Bill Baker
Academic
Basketball '39
Baseball '39 '40
Junior Committee
Civics Club
Technician Senior Play*

FLETCHER ACORD

ACADEMIC

Football '37 '38 '39

Boys' Fed. Play '40

Senior Play '40

President Block M

President Boys' Fed.

BILL BAKER

ACADEMIC

Basketball '39

Baseball '39 '40

Junior Committee

Civics Club

Technician Senior Play

"wee Willie"





Bob Boyer

BOB BOYER
GENERAL
Boys' Fed. Program
Boxing
Tumbling
Reporter of F. F. A.



Vernon Boyer

VERNON BOYER
GENERAL
Football '38
Member of Block M
Boys Fed. Program
Boxing



AUDRICE BURNSED
GENERAL
Junior Committee
Glee Club
Senior Play '39



Lucille

LUCILLE CARDOZA
GENERAL
P. E. Activities



CHARLES COON
ACADEMIC
Football '38 '39 '40
Baseball '38 '39 '40
Basketball '40
President Sophomores 1 semester
President Juniors 1 semester
Member of Block M
Junior Athletic Award
Basketball Blanket Award
Radio Play '39
Senior Play '40



Dorothy Dukes

DOROTHY LEE DUKES
GENERAL
Drama Class
Senior Play Technician
Numeral and Letter



Glenn Gallison

GLENN GALLISON
ACADEMIC
Football Manager '39
Basketball '40
Secretary Spanish Club
President English Class
Senior Play '40
Vice President of Student Body



"Gibbie"

BETTY GIBBONS
ACADEMIC
Numeral and Letter
Senior Play '40
Drama Class Play
Student Body Officer
Officer Spanish Club
President Girls' League '40
V.-President Girls' League '39



ROBERT GRAHAM
GENERAL
Transfer '39
Bud Graham
"1940"



Lloyd Hatcher

LLOYD HATCHER
GENERAL
Member of F. F. A.
Civics Club



Don Hoff

DON HOFF
ACADEMIC
Basketball '40
Baseball '39
Member of Block M
Band '36 '37
Boys' Fed. Play '40
Senior Committee '40



GLORIA HURD
ACADEMIC
Drama Class
Member of Glee Club
Member of Spanish Club



Kitty Lee

MARGARET LEE
ACADEMIC
Numeral—1939
Letter—1940
Drama Class
Technician in C. S. F. Play



Walter Lee

WALTER LEE
GENERAL
Baseball
Transfer '39
Member of Block M
Officer of the F. F. A.
Annual Staff '39



HENRIETTA LEONARD
GENERAL



Dick Lozier

DICK LOZIER
GENERAL
Boys' Fed. Program
Tumbling '39 '40
Phonograph Attendant



MELBA MARSHBANK
GENERAL
Drum Majorette '38
Band
Glee Club
Nick Depop's Orchestra



Ruby Martin

RUBY MARTIN
ACADEMIC
Letter '37
Numeral and Letter '39
Sweater '40
Officer Freshman Class



Glenn Miller

GLENN MILLERD

GENERAL

Member of Band 2 years
Editor of Sluice '39
Annual Staff '40
Technician C. S. F. Play
Boys' Federation Plays '39-'40



HARRIS MILLERD

GENERAL

Technician C. S. F. Play
Technician Girls' Play Day
Senior Play '40
Drama Class Play



*Best Wishes
Iola Murphy*

IOLA MURPHY

GENERAL

Numeral, Letter, and Sweater
Honor Society '38 '39
Drama Class
Secretary of Spanish Club '39



JAMES MURRAY

ACADEMIC

Transfer '40
Senior Play Technician
Boys' Federation Program
Tumbling

James Murray



Glen Niebuhr

GLEN NIEBUHR

GENERAL

Basketball Numeral '37
Letter '40
Band 4 years
Boys' Federation Program
Senior Class Committee
Annual Staff '40
Editor Sluice '39



HAROLD PETERSON

GENERAL

Senior Play Technician
Drama Club



Velma Phelps

VELMA PHELPS

COMMERCIAL

Numeral
Production Staff "June Mad"



*Big of letter
Glen Niebuhr
Temple Schlageter*

JIM PHILLIPS

COMMERCIAL

Football '39
Baseball '36 '37 '39 '40
Member of Block M
Drama Plays '39 '40
Annual Editor '39 '40
Sluice Editor '38
Senior Play '39 '40
Radio Program '39
Service Letter
First Band '38



TEMPLE SCHLAGETER

ACADEMIC

President of Student Body '40
President of Civics '39
President of Freshmen 1 semester
C. S. F. Plays '37 '38 '39 '40
Radio Program '39
Soph. Citizenship Award
Junior Activity Award
First Band '37 '38 '39 '40
Annual Staff '40
Senior Play '40
Boys' Federation Plays '39 '40
Life Member of C. S. F.



FRANK SCOTT
GENERAL
Member F. F. A.

Irene Sharp



IRENE SHARP
COMMERCIAL
First Band 4 Years



ESTHER SHEPHERD
GENERAL
Numeral
Drama Class
Band '39
Drum Majorette '39-'40



Ethel Silva

ETHEL SILVA
COMMERCIAL
Numeral '38
Letter '39
Sweater '40



ELRAY SWICK
GENERAL
Boys' Federation Program
Tumbling



Nadine

NADINE TRABUCCO
ACADEMIC
Numeral '39
Letter '40
Officer Freshman Class
Officer Sophomore Class
Officer Junior Class
Student Body Officer
Senior Play '40
Girls' Play Day Play



June Tresidder

JUNE TRESIDDER
ACADEMIC
Girls' League Convention '39
Girls' League Committee
Senior Play '40



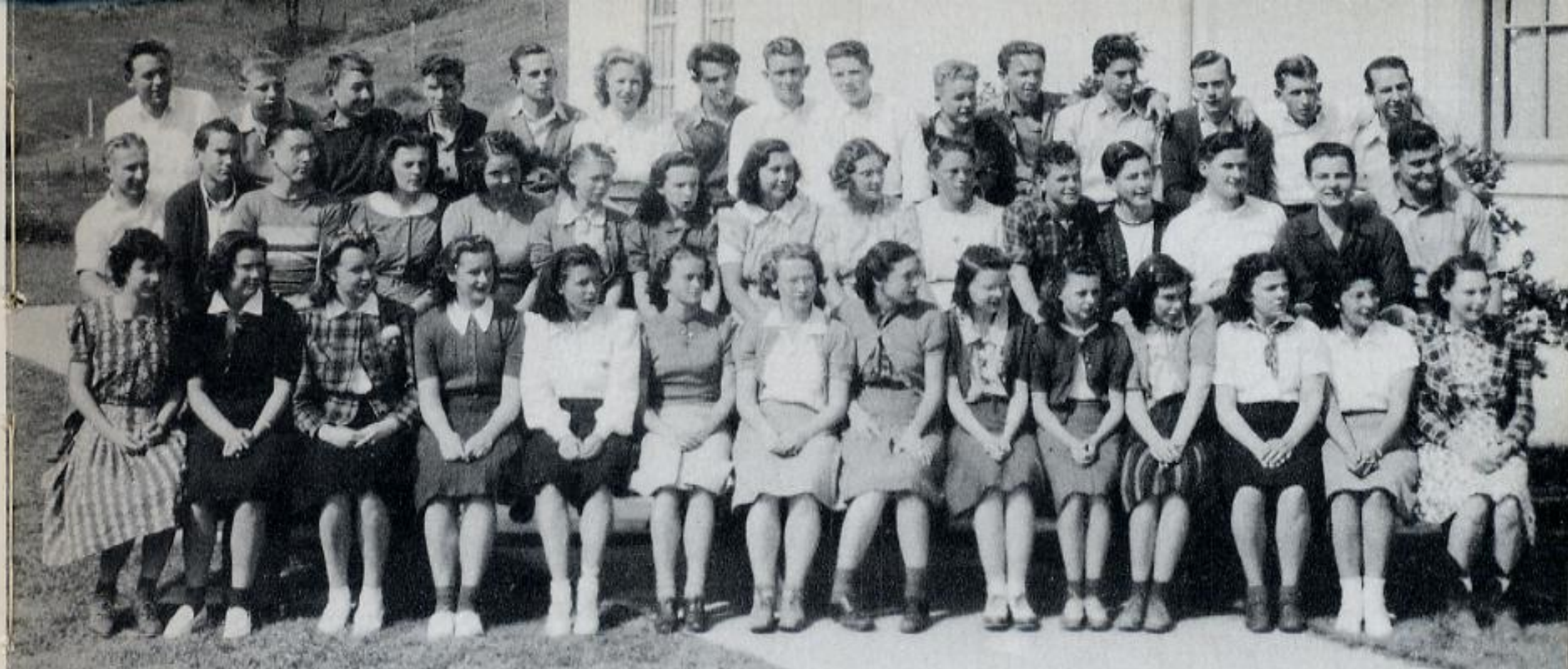
Good Luck Tommy Tucker '39-'40

TOMMY TUCKER
GENERAL
Basketball '39
President Star Gazers '37
President Spanish II '38
Student Body Officer
Sophomore Play
Master Ceremonies Football
Banquet '38
First Band 4 years



Eva Winsor

EVA WINSOR
COMMERCIAL
Numeral
Letter
C. S. F. Plays '37 '38 '39 '40
Life Member of C. S. F.
President of C. S. F. 2 semesters
Junior Scholarship Award
Editor of Sluice 3 semesters
Annual Staff '40



TOP ROW: Sturtevant, Grenfell, Merriam, Justin, Hayhurst, Reece, Taylor, Bassett, Felts, Kinney, Prowse, Carter, Brooke, Reece, McNally. CENTER ROW: Irwin, Filippi, Hatcher, Camis, Kidd, Porter, Mulligan, Filippi, Hull, Hull, Farr, Stewart, Matschke, Lind, Fournier. BOTTOM ROW: Youd, Filippi, Cookson, Ashworth, Van Housen, Harrod, Abbott, Jones, Clark, Brooks, Scott, Wass, Gordo, Wilkinson.

"Comin' Thru The Rye"

Time marches on and we now give three cheers for the most aggressive class in school. We took a year out to celebrate and celebrate we did. Perhaps you have heard of our famous movies, those humorous unusual pictures that announce their own presence once a month by the unsuppressed sounds of merriment coming from the auditorium.

Or maybe you have listened to the excited whispers about our Valentine Party. Of course you know about Play Day when grammar school athletes bought their refreshments from us. Remember our Noon Dances, and that mysterious "Madam Hoff", who heard all, knew all, and told all? Add to this our Annual Picnic and you get the answer to the busiest, most progressive class in High School.

Not scrubs . . . nor even Sophies, but——Juniors!!

——Betty Youd.

MISS WHITNEY

Grace Whitney



MR. BERGLAND



JUNIOR OFFICERS

M. Irwin	President	M. Irwin
G. Grenfell	Vice-President	G. Grenfell
B. Abbott	Secretary	B. Cookson
R. Brooke	Treasurer	H. Reece
Miss Whitney	Advisors	Mr. Bergland



TOP ROW: Lintott, Babcock, Bullard, Hargrove, Rogers, Clontz, Pummill, Daugherty, Scurlock, Walling, Kramer, Mulligan, Camis, Cardoza, Jones. SECOND ROW: McElligott, Graham, Buckley, Henry, Merz, Saye, Sharp, Rowland, Gordo, Sparks, Scott, Niebuhr. THIRD ROW: Rice, McNally, Price, Norris, Gilliland, Jastram, Harris, Thomas, Bradberry, Wallman, Spaulding, Jordan, Hills, Lozier. BOTTOM ROW: Spelt, Murphy, Phillips, Brandon, Moen, Jobe, Hilton, Westfall.

"Comin' Round The Mountain"

"Back again, and to new life!" was the cry of us proud Sophomores when we entered the school building last fall; heads high; shoulders erect. Yes, we were off to a new year which started with an overwhelmingly successful Freshman Initiation. This was closely followed by numerous candy and "hot dog" sales at our exciting football games, both of which proved likewise successful.

Christmas came and the Sophomores were at it again, giving baskets of food and clothing to the needy in the county.

Could we help it if it didn't snow for our supposed "Snow Party"? Anyhow, it was fun trying!

The climax in our money-making came in our supply store, originated and carried through by the best class, Sophomores, naturally!

Year's end . . . Class Picnic great success, and we were off to another adventurous Summer only to "store up" energy and new ideas for the Juniors of the next term.

—Marilyn Moen.

MISS YATES



SOPHOMORE CITIZENSHIP AWARDS
MARILYN MOEN and BILL LINTOTT

SOPHOMORE OFFICERS

Marilyn Moen	President	Lloyd Kramer
Bill Lintott	Vice-President	Betty Phillips
Carolyn Price	Secretary	Ellen Norris
Roger McElligott	Treasurer	Roger McElligott
Miss Yates	Advisors	Mr. Vaughn

MR. VAUGHN





TOP ROW: Stribling, Barth, Wass, Fraser, Palmer, Gallison, Bloomer, Trabucco, McDonnel, Sanchez, Corwin, Wilson, Lanyon, Hack, Wass. SECOND ROW: Heisey, Welborn, Phillips, Turner, Collins, Dover, Tiewater, Freeman, Cocanour, Zickefoose, Wackerman, Phelps, Kincaid, Trulock, Schottky. THIRD ROW: Nesbit, Brent, Ashworth, Murray, Massey, Taylor, Zimmerman, Fournier, Gale, Gale, Macready, Spaulding, Seehuber, Abbott, Scott. FOURTH ROW: Merrick, Hargrove, Brown, Lariviere, Tresidder, Martin, Harlow, Bradberry, Hatcher, Barrett, Gale, Lewis.

"There's A Long, Long Trail"

Of course you have noticed us by this time. We are the class of '43. We have proved ourselves to be not just the Class of '43, but a well organized body, represented in the Honor Society, sports, band, and every other active organization that we are eligible for.

With our class advisors, Miss Black and Mr. Adelsbach, guiding us, we made a success of all our sales and the success of our Sophomore Return Party surprised everyone.

MISS BLACK

FRESHMAN OFFICERS

Ronald TrabuccoPresident.....	Andrew Schottky
Ruth TaylorVice-President.....	Bryan Welborn
Mary HatcherSecretary.....	Gilbert Sanchez
James WilsonTreasurer.....	Ira Kincaid
Miss BlackAdvisors.....	Mr. Adelsbach

MR. ADELSBACH

