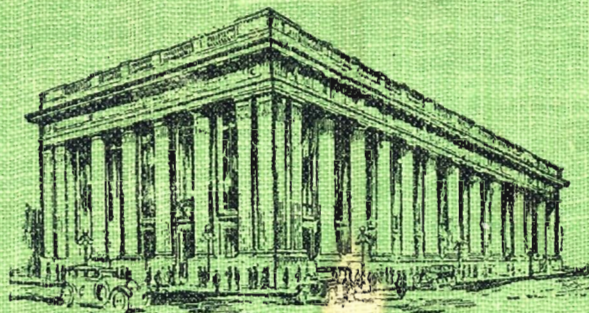


THE
CALIFORNIA NATIONAL BANK
and
CALIFORNIA TRUST and SAVINGS BANK

Amalgamated With The National Bank of D. O. Mills and Co. Established 1849



NEW AMALGAMATED BANK BUILDING, 7TH AND J STS., SACRAMENTO

A Most Complete Banking Service

7th and J (Formerly D. O. Mills Bank)
NORTH SACRAMENTO TELEPHONE MAIN 5300 IONE, CALIFORNIA



Frank Z. Ahl Sheet Metal Works

1615 21st STREET — SACRAMENTO — MAIN 3800

Manufacturers of
Everything In Sheet Metal

Heating and Ventilating Equipment
Ahl Gas Furnaces and Cabinet Heaters

SACRAMENTO LUMBER CO.

Building Material
Supply House

12th and NORTH B STS.

PHONE MAIN 711

SEEDS F. LAGOMARSINO & SONS
See Page 79





For 48 Years

Our resources have contributed materialy to the upbuilding and progress of Sacramento and vicinity.

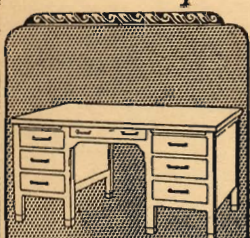
THE PEOPLES BANK

COMMERCIAL AND SAVINGS

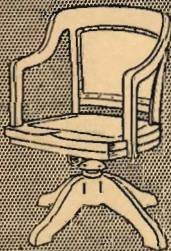
Eighth and J Streets

Sacramento, Calif.

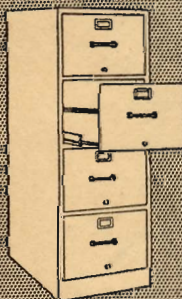
H.S. CROCKER CO. Inc.



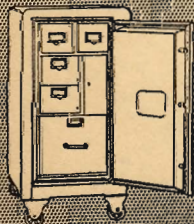
DESKS



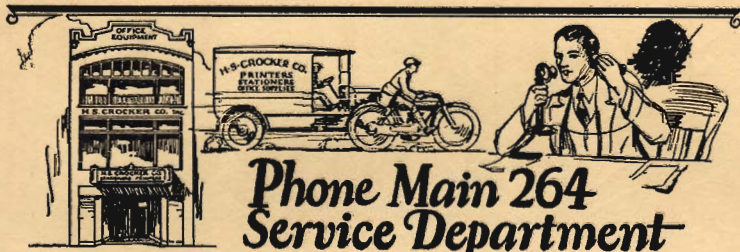
CHAIRS



FILES



SAFES



Phone Main 264
Service Department

**Telephone/ Save Time/ Instant Service/
Immediate Delivery!**

A special department to serve your requirements in
STATIONERY, PRINTING, OFFICE SUPPLIES and OFFICE FURNITURE.
Call Main 264 and ask the operator for the "SERVICE DEPARTMENT"

Printing

Call the
CROCKER
SALESMAN
Main 264

H.S. CROCKER CO. Inc.
923 K Street Sacramento.

SAN FRANCISCO

LOS ANGELES

SACRAMENTO CITY DIRECTORY 1927

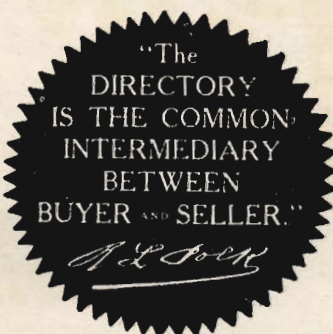
Containing an Alphabetical List of Business Firms and
Private Citizens and Its Environs; a Directory of the
City, County and State Officers, Churches, Public
and Private Schools, Secret, Benevolent, Lit-
erary and other Associations; a Revised
Street and Avenue Householders
Guide of the City; a

"BUYERS' GUIDE"

AND A COMPLETE

CLASSIFIED BUSINESS DIRECTORY

PRICE



\$15.00

SACRAMENTO DIRECTORY CO., Publishers

423 J STREET

San Francisco Office, 703 Atlas Building, 604 Mission Street

Member Association of North American Directory Publishers

COPYRIGHT 1927 BY SACRAMENTO DIRECTORY CO.
Larkin Printing Co.  Sacramento, Cal.

INTRODUCTION

The volume herewith presented constitutes R. L. Polk & Co.'s Sacramento Directory for 1927. The publishers have endeavored to produce a volume combining all that is vital in the civic, social and industrial life and activity of Sacramento.

A careful enumeration of the citizens and business interests of the community and a compilation of the result by trained employees assures as correct and reliable a work of its character as is possible to be produced. The publishers have an organization solely devoted to the publication of directories, and their methods and resources are unrivalled. Their imprint on the hundreds of directories published for cities throughout the country attests the quality and reliability of their product. Directories are an essential and indispensable means of reference and an index to what is in a community. They portray it as it actually is and they are the only means whereby its various features can be learned by the general public throughout the country.

The several essential departments of the Directory are set forth in the order following:

THE MISCELLANEOUS DEPARTMENT, pages 13 to 20, include data concerning city and county officials, churches, clubs, associations, schools, societies, parks, public buildings and halls, secret and benevolent societies, etc.

THE BUYERS' GUIDE, pages 29 to 86, contains the advertisements of the leading and progressive business men and concerns alphabetically arranged under headings adapted to the class of business conducted. This feature is printed on tinted paper.

THE ALPHABETICAL LIST OF NAMES OF CITIZENS, business firms and corporations is embraced in pages 89 to 603.

THE STREET AND AVENUE GUIDE AND DIRECTORY OF HOUSEHOLDERS extends from pages 605 to 780.

THE CLASSIFIED BUSINESS DIRECTORY is included in pages 803 to 888 and shows the various manufacturing, mercantile and professional occupations, compiled under headings appropriate to the class of business pursued. This department will be appreciated as a special trade directory. The directory is the common intermediary between buyer and seller.

Sacramento Facts and History

AGRICULTURAL

Sacramento Region produces 40% of the total value of agricultural products in the State of California.

INDUSTRIAL

Number of Manufacturing Plants:

1919.....284

1926.....420

Annual value Manufactured Products: \$64,000,000.00

LOCATION

Geographic and economic distribution center of the Sacramento Region, composed of twenty-one counties possessing over fifty per cent of the water resources of the State of California, rich agricultural lands and diversified industrial resources including lumber and industrial mineral deposits.

RAW MATERIALS

Center of great producing area including the widest diversification of resources in the State.

TRANSPORTATION

Two transcontinental railroads. Four interurban electric lines. Four Sacramento River steamer lines, 268 vessels. Eleven motor stage lines. Ten motor truck lines.

POWER

Abundance of electric power at low rates.

WATER

Excellent municipal water supply in abundance at lowest rates in United States.

AVAILABLE SITES

Excellent locations on rail and water or both, available at reasonable cost.

MUNICIPAL CONDITIONS

Low tax rates, excellent housing conditions, progressive city government providing ample facilities for industrial expansion.

LABOR

Largest labor market west of Chicago with excellent relations prevailing.

OPPORTUNITY

A sound, prosperous, expanding section of California with increasing markets.

The Sacramento Chamber of Commerce

Is at your service for further information



SACRAMENTO, the "Heart of California" and the capital city of the State, is located at the confluence of the Sacramento and American rivers, in the center of the great agricultural and mineral producing area of California. With the background of a glorious history in which the city became the cradle of American civilization on the Pacific Coast, Sacramento, through her years of civic and commercial progress, has maintained leadership among the cities of the West.

The close of the year 1926 marked a five-year period of development not matched by any previous twenty-year period in the history of the city. This was due in part to the progress of the Sacramento Valley and Mountain counties, and also to the large program of municipal development undertaken by the citizens themselves through their municipal government. During this period approximately \$60,000,000 was expended on improvements in building permits, bond funds, municipal budgets and allied activities.

The opening of the civic auditorium early in 1927 marks the conclusion of an unit of development undertaken by the city government in which vast extensions of the services rendered by the city were made. In 1926 the citizens voted another development unit of nearly \$2,000,000 for further municipal service extensions.

Sacramento has graduated from the ordinary capital city to a thriving metropolis of 105,000.

The westward movement of population has found Sacramento one of the beautiful cities of the Golden State, a comfortable and prosperous community in which to live.

The city is built on a level plain with an area of fourteen square miles. The climate is semi-tropical with an average mean temperature of sixty degrees.

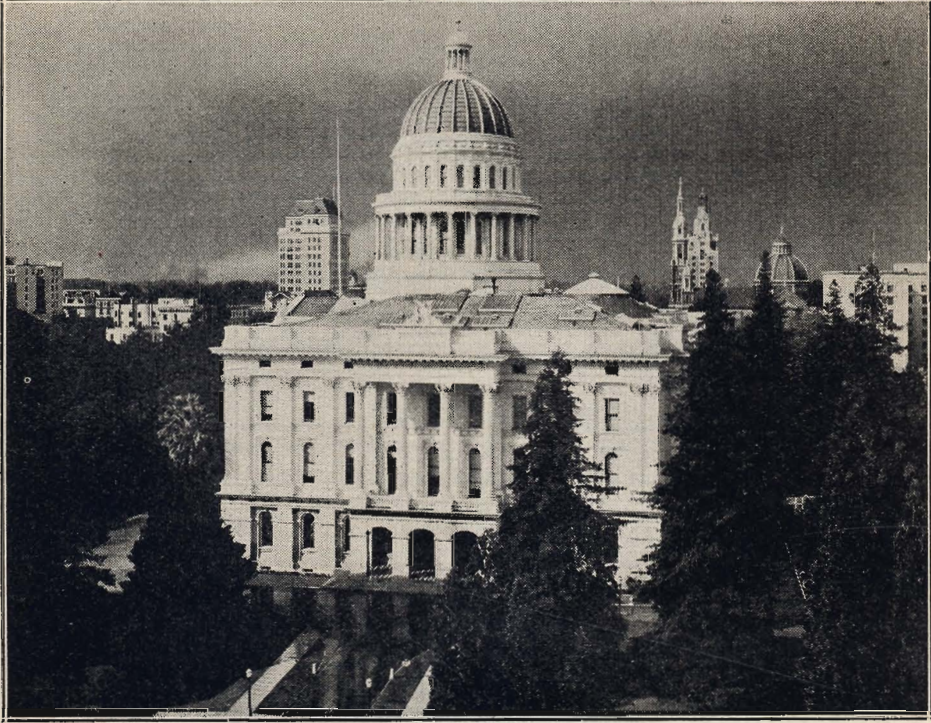
Sacramento's streets are wide and have been made attractive by trees. There are eleven municipal parks containing more than one thousand acres.

Sacramento is the home of the California State Fair which is known as the best exposition of its kind in point of exhibits of agricultural products.

Sacramento has many historical points of interest including Sutter Fort, State Capitol and the Crocker Art Gallery.

Sacramento's school system is recognized as one of the best in the United States. New buildings have been provided including a new main high school and a new junior college. Several new hospitals, both public and private, have been constructed.

Sacramento's industrial development has been remarkable. There are now 420 industrial plants in the city. The principal industry is that of the canning and pre-



STATE CAPITOL BUILDING

serving of fresh fruits and vegetables, and Sacramento is now recognized as the canning center of California.

This is due to the fact that the Sacramento area is the largest deciduous fruit producing section in the world. In 1926, 3,147,000 cases of fruits and vegetables were canned in the Sacramento plants.

Sacramento is the banking center of interior California, being served by seven state banks with four branches and four national banks. The bank clearings in 1926 were approximately \$450,000,000.

HISTORY

With dreams of a great agricultural empire and holding a land grant from the Mexican government, John A. Sutter sailed up the Sacramento River in August, 1839, and founded the settlement now known as Sacramento. He made friends with the Indians, erected a fort, and soon became prosperous as the head of an agricultural, grain and cattle industry. The discovery of gold at Sutter's mill in Coloma, sixty miles distant, by James Marshall, proved the ruin of Sutter's fortune and the beginning of the rapid growth of Sacramento as the Mecca for the gold seekers in the rush that followed. Sutter's men all deserted him for the mines, and although the city suffered many reverses in its early history, such as floods, epidemics, and fires, these difficulties were overcome and the city now stands entirely free from such dangers.

Sacramento became the distributing center for the mines, and although the city suffered many reverses in its early history, such as floods, epidemics, and fires, these difficulties were overcome and the city now stands entirely free from such dangers. Sacramento became the State Capital in 1854 and was chartered as a city in 1863.

THE SACRAMENTO CHAMBER OF COMMERCE

This organization is the active representative of the commercial, industrial, financial and civic interests of Sacramento in promoting its welfare and prosperity. It is equipped to supply complete and authentic information on all matters relating to Sacramento and Northern California. The chamber maintains an Industrial Department, Agricultural Department, Tourist Bureau, Convention Department and a Mining Department for this purpose. Arthur S. Dudley is Secretary-Manager. The chamber occupies its own building at 917 Seventh Street.

INDEX TO CONTENTS

	Page
Abbreviations	88
Alphabetical List of Names	89
Buyers' Guide	29
City Government	13
Classified Business Directory	803
County Government	14
Householders	605
Introduction	6
Miscellaneous Information	13
State Offices and Officers	14
Street and Avenue Guide	605
United States Offices and Officers	16

INDEX TO ADVERTISERS

	Page
Acme Transfer & Storage Co.	83
Adams, H. O.	left side lines and 47
Affleck, A. J., Pharmacy	right side lines and 49
Affleck Laboratories	65
Ahl, Frank Z., Sheet Metal Works	front cover and classified insert
Albright, S. S. Co.	back cover and 33
American River Auto Camp	32
Artz, Cook & Drew, Inc.	right top lines, 62 and 75 and Classified Tab
Associated Oil Co.	69
Baker, Herbert R.	right top lines and 62
Benjamin, Eugene & Co.	71
Berger, Art	left side lines and 80
Berry's Foundry	left side lines and 52
Blyth Witter & Co.	40
Bock, Geo.	right side lines and 80
Breuner, John Co.	54
Brooke Realty Co.	75
Brown, O. F.	59
Bryant & Bryant	North Sacramento insert
Burnett & Sons	71
California Mechanical & Electrical Engineering Co.	right bottom lines and 51
California National Bank	left top, right top lines, front cover and 37
California State Life Ins. Co.	62
Capital City Plating Works	72
Capital City Title Co.	30 and 82
Capital Furniture Mfg. Co.	55
Capital Lumber Co.	left top lines and 67
Capital National Bank	39
Capital Nursery	left side lines and "Y"
Capital Roofing & Supply Co.	left top lines and 78
Carlaw Bros.	"X"
Carlson, C. E.	North Sacramento insert
Carlson's Garage	North Sacramento insert
Cascade Laundry	right top lines and 66
Chevrolet Motor Co. of Cal.	34
Cippa, Fred T.	right top lines and 84
Citizens Bank of Sacramento	39
Clark, Booth & Yardley	right and left side lines and 84
Commercial Foundry	right side lines and 52
Consumers Ice & Cold Storage Co.	left bottom lines and 59
Crane Company	73
Crocker, H. S. Co., Inc.	4
Crystal Ice & Cold Storage Co.	59
Dalton, M. G. Co.	34
Dean Witter & Co.	41
Deschler, Edw. L.	69
Duchez, Jerome	43
Duffy Detective Agency	right bottom lines and 49
East Lawn Mausoleum	"Z"
Ehmann-Kohler Stationery Co.	right top lines and 80
Electric Laundry & Linen Supply	right bottom lines and 66
Electric Transfer & Storage Co.	left top lines and 83
Elliott & Huston	75
Emigh-Winchell Hardware Co.	55
Eureka Auto Wrecking Co.	North Sacramento insert
Eureka Painting Co.	70
Farmers and Mechanics Bank	front edge and 38
Ferguson, D. F. Co.	62
Ficetti Dry Cleaning Co.	43
Fleming, Chas. N. Co., Inc.	backbone and 73
Flemming's Hat Works	56
Friend & Terry Lumber Co.	right top lines and 67
Fuller, W. P. & Co.	70
Garford Motor Truck Co., Inc.	34
Girot, Leo A.	47
Gleie, Harry E.	70
Gormley, W. F.	right bottom lines and 85
Gray Nurseries	back cover and "Y"
Greer & Harrigan	left side lines, 63 and 76
Griffith, G. O.	48
Hackett-Brockway Co.	right top lines and 63

INDEX TO ADVERTISERS—Continued

	Page
Hanrahan-Burns Fuel Co., Inc.	Classified insert and 44
Hart, Floyd B.	34
Heald's Business College	50
Henry's Law & Collection Co.	top and bottom edges, 31 and 45
Hickman-Coleman Co., Inc.	63
Holt, C. A.	79
Horrell, Fred & Son	left side lines and 44
Hotel Clunie	58
Hotel Main	58
Hotel Senator	57
Howe's Normal Academy	50
Jenkins, Geo. R. Co., Inc.	right top lines, 60 and 74
Katzenstein, C. L. & Co.	left top lines and 60
Kauffman, Preston	right bottom lines and 56
Keeney School, The	left top lines and 49
Kenny's, Inc.	backbone and 45
Klein & Lilly	75
Knox Lumber Co.	67
Kuechler Bros.	86
Lagomarsino, F. & Sons	front cover and 79
Larkin Printing Co.	left bottom lines and 74
Leitch Roofing Co.	left bottom lines and 78
Leonard, Ben Co.	76
Lloyd Travel Co., Inc.	left bottom lines and 33
Luppen & Hawley, Inc.	left side lines and 72
McCarthy & McGee	right bottom lines and 61
McDonogh, S. J., Inc.	right side lines and 33
McGillivray Construction Co.	48
Mason's Laundry	left bottom lines and 66
Merchants National Bank	3
Miller Automobile Co.	35
Miller, Carl E.	63
Miller & Cahill	72
Miller & Co.	back cover, left side lines, 31 and 45
Miller & Skelton	right top lines and 85
Mitchum Tully & Co.	40
Moeller Auto Sales Co.	35
Moore & Garlick	71
Morrissey Company	76
Mott, Phil	left side lines and 73
Murray, Frank J.	left top lines and 40
National Mercantile Agency	front cover, right bottom lines, 31 and 46
Natomas Co. of Cal.	right bottom lines and 51
Nauman, Harry A. & Son	left bottom lines and 85
Navlet, The Florist	52
Nickles & Peacock	42
Noack, Chas. J. Co.	65
North Sacramento Motor Co.	North Sacramento insert
North Sacramento Plumbing Supply & Hdwe. Co.	North Sacramento insert
Oak Park Nursery	left side lines and 52
O'Brien, T. L.	Classified Tab
Opdyke, Paul R.	back cover and 47
Pacific National Fire Ins. Co.	64
Paint Right Auto Shop	right side lines and North Sacramento insert
Palace Laundry	right bottom lines and 66
Pearsons-Taft Co.	41
Pease Music School	right bottom lines and 50
Pierce Fair & Co.	41
Peoples Bank, The	2 and 39
Perkins & Co.	73
Peterson, Ellis	right bottom lines and 85
Pierson, A. E.	56
Pioneer Fuel Co.	44
Rand Kardex Service Corp.	left top lines and 86
Realty Mortgage Ins. Corp.	back cover and 76
Reliable Electric Works	51
Reo Motor Car Co.	35
Robertson-Govan Co.	front cover, left top lines, 64 and 77
Rodehaver, H. B.	left top lines and 61
Rollins, E. H. & Sons	41
Rouse, Willard P.	35
Rowland, L. B.	64
Russell & Logan	39
Sacramento Abstract & Title Co.	30 and 82
Sacramento Box & Lumber Co.	right side lines and 68
Sacramento Brick Co.	42
Sacramento Builders Supply Co.	left side lines and 43
Sacramento Building Block Co.	left side lines and 43
Sacramento Cooperage	left bottom lines and 48
Sacramento Lumber Co.	front cover and 68
Sacramento Pipe Works	71
Sacramento Plating Works	72
Saunders, Jos.	left side lines and 70
Schaw Batcher Co.	55
Schneider, Chappell & Jones	Alphabetical insert and 86
Sherman Clay & Co.	69
Shoemaker, C. L.	30
Silvius & Schoenbackler	right bottom lines and 42
Sixteenth Street Mill & Lumber Co.	left bottom lines and 68
Smith, J. L.	right top lines and 32
Southward Motor Co.	36
Spelman-Bristol, Inc.	left top lines and 77
State Hotel	58
Straine & Pillsbury	30
Straub, John	Alphabetical insert
Superior Lumber & Fuel Co.	68
Sweet, A. W.	left top lines

INDEX TO ADVERTISERS—Continued

	Page
Taylor, John G.....	48
Teddy's Brown Cab Co.....	left top lines and 81
Tonarelli, Geo. R.....	left side lines and 40
Tong Sung Co.....	right side lines and 46
Universal Motor Co.....	backbone and 36
Valley Seed Co.....	79
Van's Garage.....	55
Wagner's Sheet Metal Works.....	53
Wahl, Ed.....	right top lines and 78
Wallis Tractor Agency.....	51
Wanamaker, Joy F.....	North Sacramento insert 77
Waters, Neideffer & Waters.....	31
Weber, R. F.....	right side lines and 64
Wentz, J. H.....	65
West Coast Life Ins. Co.....	65
Western Union Life Ins. Co.....	right side lines and 83
Wholesale Typewriter Co.....	right side lines, 32 and 46
Wilkie Collection Agency.....	77
Wright & Kimbrough.....	69
Ye Music Shoppe.....	right side lines and 81
Yellow Cab Co.....	

CITY AND COUNTY DIRECTORIES AND STATE GAZETTEERS

ALABAMA	Atlanta	Hutchinson	St. Joseph	Perth Amboy,	Lorain	Beaumont
Albany	Augusta	Independence	Sault Ste. Marie	incl.	Marietta	Brownwood
Annisson	Brunswick	Iola	Traverse City	Woodbridge,	Mariano	Cleburne
Bessemer	Columbus	Junction City	Wyandotte	Sewaren,	Newark	Corsicana
Birmingham	Macon	Kansas City	Ypsilanti	Fords and	Piqua	Dallas
Decatur	Moultrie	Lawrence	MINNESOTA	Kenasby	Portsmouth	Denison
Florence	Thomasville	Leavenworth	State Gazetteer	Plainfield, incl.	Salem	Denton
Mobile	Valdosta	Neodesha	Albert Lea	Westfield,	El Paso	Fort Worth
Montgomery	Waycross	Ottawa	Austin	Mountainside,	Timon	Galveston
Shelfield	HAWAIIAN TER.	Parsons	Bemidji	Dunellen,	Toledo	Greenville
Tuscaloosa	Honolulu	Pittsburg	Brainerd	Fanwood and	OKLAHOMA	Houston
Tuscumbia		Topeka	Duluth	Scotch Plains	State Gazetteer	Marshall
ALASKA		Wellington	Fairbault	Rahway	Alva	Paestine
Alaska and		Winfield	Hibbing	Red Bank	Armore	Paris
Eukot			Mankato	Rutherford, incl.	Bartlesville	Plainville
Gazetteer			Minneapolis	E. Rutherford,	Chickasha	Port Arthur
ARIZONA		KENTUCKY	New Ulm	Lyndhurst,	Claremore	San Angelo
Phoenix		Lexington	Owatonna	Carlstadt,	Cushing	Sherman
Prescott		Owensboro	Red Wing	Wood Ridge	Durant	Temple
ARKANSAS		LOUISIANA	St. Cloud	Wallington	El Reno	Texarkana
State Gazetteer		Lake Charles	St. Paul	Salem	Enlow	Tyler
Camden		New Orleans	Stillwater	Somerville, incl.	Guthrie	Waco
El Dorado		Shreveport	Thief River	Boundbrook,	Henryetta	Wheila Falls
Hot Springs			Falls	S. Boundbrook	Hugo	Waxahachie
Little Rock		MARYLAND	Winona	Raritan,	Lawton	
Texarkana		State Gazetteer		Finderne	McAlester	UTAH
CALIFORNIA		Annapolis	MISSISSIPPI	Miami	Muskogee	State Gazetteer
Alameda		Baltimore	Bloom	Oklaoma City	Najawid	Logan and Cache
Alhambra		Cumbarland	Columbus	Pawhuska	Oklahoma City	Oeden City
Bakersfield		Frederick	Gulport	Pleher	Shawnee	Provo
Benicia		MASSACHUSETTS	Hattiesburg	Tecumseh	Salina	Salt Lake City
Berkeley		Ashland,	Meridian	Toikawa	Tulsa	VIRGINIA
Chico-Oroville		Holliston,	Natchez			Alexandria
Colusa		Hopkinton	Viicksburg			Bristol
Compton		Dixon				Charlottesville
Dinuba		Edwardsville				Lynchburg
Eureka		Edwardo				Newport News
Exeter		Evansston				Norfolk
Flamano		Georgetown				Pendergast
Gardena		Granite City				Portsmouth
Lindsay		Harrisburg				Richmond
Los Angeles		Hillsboro				Romano
Madera		Hopkinton				Staunton
Merced		Dixon				
Modesto		Edwardsville				WASHINGTON
Moneta		Edwardo				State Gazetteer
Napa		Evansston				Bellingham
Ocean Park		Georgetown				Bremont
Pasadena		Granite City				Chelan Co.
Pomona		Harrisburg				Cowlitz Co.
Porterville		Hillsboro				Ellensburg and
Redlands		Hopkinton				Kittitas
Richmond		Dixon				Everett
Riverdale		Edwardsville				Grays Harbor Co.
Sacramento		Edwardo				Island and
San Bernardino		Evansston				San Juan Cos.
San Diego		Georgetown				Keiso
San Fernando		Granite City				Lewis Co.
Valley		Harrisburg				Olympia
San Francisco		Hillsboro				Port Angeles
San Jose		Hopkinton				Sentile
San Luis Obispo		Dixon				Spokane City
San Pedro		Edwardsville				Tacoma
Santa Barbara		Edwardo				Vancouver and
Santa Cruz		Evansston				Walla Walla City
Santa Maria		Georgetown				Whitman and
Santa Monica		Granite City				Garfield Co.
Santa Rosa		Harrisburg				Yakima City
Stockton		Hillsboro				WEST VIRGINIA
Tulare		Hopkinton				State Gazetteer
Vallejo		Dixon				Bluefield
Venice		Edwardsville				Charleston
Ventura Co.		Edwardo				Clarksburg
Walla		Evansston				Elkins
Washita		Georgetown				Fairmont
Wheeler		Granite City				Martinsburg
Wheeler		Harrisburg				Morgantown
Wheeler		Hillsboro				Moundsville
Wheeler		Hopkinton				Parkersburg
Wheeler		Dixon				Weston
Wheeler		Edwardsville				Wheeling
Wheeler		Edwardo				WISCONSIN
Wheeler		Evansston				State Gazetteer
Wheeler		Georgetown				Appleton
W		Granite City				Ashland
W		Harrisburg				Chippewa Falls
W		Hillsboro				Door County
W		Hopkinton				Eau Claire
W		Dixon				Fond du Lac
W		Edwardsville				Green Bay
W		Edwardo				Janesville
W		Evansston				Kenosha
W		Georgetown				La Crosse
W		Granite City				Madison
W		Harrisburg				Manitowoc
W		Hillsboro				Marion
W		Hopkinton				Merrill
W		Dixon				Milwaukee
W		Edwardsville				Waukesha
W		Edwardo				Wauwatosa
W		Evansston				Wausau
W		Georgetown				West Allis
W		Granite City				WYOMING
W		Harrisburg				Caoper
W		Hillsboro				Cheyenne
W		Hopkinton				Laramie
W		Dixon				Shoshone
W		Edwardsville				Stevens Point
W		Edwardo				Superior
W		Evansston				Watertown
W		Georgetown				Wichita
W		Granite City				Windsor
W		Harrisburg				Wynona
W		Hillsboro				Wyndover
W		Hopkinton				Wyndover
W		Dixon				Wyndover
W		Edwardsville				Wyndover
W		Edwardo				Wyndover
W		Evansston				Wyndover
W		Georgetown				Wyndover
W		Granite City				Wyndover
W		Harrisburg				Wyndover
W		Hillsboro				Wyndover
W		Hopkinton				Wyndover
W		Dixon				Wyndover
W		Edwardsville				Wyndover
W		Edwardo				Wyndover
W		Evansston				Wyndover
W		Georgetown				Wyndover
W		Granite City				Wyndover
W		Harrisburg				Wyndover
W		Hillsboro				Wyndover
W		Hopkinton				Wyndover
W		Dixon				Wyndover
W		Edwardsville				Wyndover
W		Edwardo				Wyndover
W		Evansston				Wyndover
W		Georgetown				Wyndover
W		Granite City				Wyndover
W		Harrisburg				Wyndover
W		Hillsboro				Wyndover
W		Hopkinton				Wyndover
W		Dixon				Wyndover
W		Edwardsville				Wyndover
W		Edwardo				Wyndover
W		Evansston				Wyndover
W		Georgetown				Wyndover
W		Granite City				Wyndover
W		Harrisburg				Wyndover
W		Hillsboro				Wyndover
W		Hopkinton				Wyndover
W		Dixon				Wyndover
W		Edwardsville				Wyndover
W		Edwardo				Wyndover
W		Evansston				Wyndover
W		Georgetown				Wyndover
W		Granite City				Wyndover
W		Harrisburg				Wyndover
W		Hillsboro				Wyndover
W		Hopkinton				Wyndover
W		Dixon				Wyndover
W		Edwardsville				Wyndover
W		Edwardo				Wyndover
W		Evansston				Wyndover
W		Georgetown				Wyndover
W		Granite City				Wyndover
W		Harrisburg				Wyndover
W		Hillsboro				Wyndover
W		Hopkinton				Wyndover
W		Dixon				Wyndover
W		Edwardsville				Wyndover
W		Edwardo				Wyndover
W		Evansston				Wyndover
W		Georgetown				Wyndover
W		Granite City				Wyndover
W		Harrisburg				Wyndover
W		Hillsboro				Wyndover
W		Hopkinton				Wyndover
W		Dixon				Wyndover
W		Edwardsville				Wyndover
W		Edwardo				Wyndover
W		Evansston				Wyndover
W		Georgetown				Wyndover
W		Granite City				Wyndover
W		Harrisburg				Wyndover
W		Hillsboro				Wyndover
W		Hopkinton				Wyndover
W		Dixon				Wyndover
W		Edwardsville				Wyndover
W		Edwardo				Wyndover
W		Evansston				Wyndover
W		Georgetown				Wyndover
W		Granite City				Wyndover
W		Harrisburg				Wyndover
W		Hillsboro				Wyndover
W		Hopkinton				Wyndover
W		Dixon				Wyndover
W		Edwardsville				Wyndover
W		Edwardo				Wyndover
W		Evansston				Wyndover
W		Georgetown				Wyndover
W		Granite City				Wyndover
W		Harrisburg				Wyndover
W		Hillsboro				Wyndover
W		Hopkinton				Wyndover
W		Dixon				Wyndover
W		Edwardsville				Wyndover
W		Edwardo				Wyndover
W		Evansston				Wyndover
W		Georgetown				Wyndover
W		Granite City				Wyndover
W		Harrisburg				Wyndover
W		Hillsboro				Wyndover
W		Hopkinton				Wyndover
W		Dixon				Wyndover
W		Edwardsville				Wyndover
W		Edwardo				Wyndover
W		Evansston				Wyndover
W		Georgetown				Wyndover
W		Granite City				Wyndover
W		Harrisburg				Wyndover
W		Hillsboro				Wyndover
W		Hopkinton				Wyndover
W		Dixon				Wyndover
W		Edwardsville				Wyndover
W		Edwardo				Wyndover
W		Evansston				Wyndover
W		Georgetown				Wyndover
W		Granite City				Wyndover
W		Harrisburg				Wyndover
W		Hillsboro				Wyndover
W		Hopkinton				Wyndover
W		Dixon				Wyndover
W		Edwardsville				Wyndover
W		Edwardo				Wyndover
W		Evansston				Wyndover
W		Georgetown				Wyndover
W		Granite City				Wyndover
W		Harrisburg				Wyndover
W		Hillsboro				Wyndover
W		Hopkinton				Wyndover
W		Dixon				Wyndover
W		Edwardsville				Wyndover
W		Edwardo				Wyndover
W		Evansston				Wyndover
W		Georgetown				Wyndover
W		Granite City				Wyndover
W		Harrisburg				Wyndover
W		Hillsboro				Wyndover
W		Hopkinton				Wyndover
W		Dixon				Wyndover
W		Edwardsville				Wyndover
W		Edwardo				Wyndover
W		Evansston				Wyndover
W		Georgetown				Wyndover
W		Granite City				Wyndover
W		Harrisburg				Wyndover
W		Hillsboro				Wyndover
W		Hopkinton				Wyndover
W		Dixon				Wyndover
W		Edwardsville				Wyndover
W		Edwardo				Wyndover
W		Evansston				Wyndover
W		Georgetown				Wyndover
W		Granite City				Wyndover
W		Harrisburg				Wyndover
W		Hillsboro				Wyndover
W		Hopkinton				Wyndover
W		Dixon				Wyndover
W		Edwardsville				Wyndover
W		Edwardo				Wyndover
W		Evansston				Wyndover
W		Georgetown				Wyndover
W		Granite City				Wyndover
W		Harrisburg				Wyndover
W		Hillsboro				Wyndover
W		Hopkinton				

SACRAMENTO DIRECTORY CO'S SACRAMENTO CITY DIRECTORY 1927

SACRAMENTO DIRECTORY CO., Publishers

MISCELLANEOUS INFORMATION

For information not found in this department see regular Alphabetical Section or under proper heading in Classified Business Directory.

CITY GOVERNMENT

City Hall I bet 9th and 10th

Mayor—A E Goddard
Manager—H C Bottorff
Assessor Collector—C W Mier
Attorney—R L Shinn
Auditor—E D Adams
Bacteriologist—J R Snyder
Building Inspector—B H Covell
Bureau of Criminal Identification—M F Fisher supt
Civil Service Board—R C Oakley sec
Clerk—H G Denton
Controller—Cornig De Saules
Councilmen—C W Anderson, T F Bellhouse, C H S Bidwell, R E Conley, W I Elliott, H S Kiernan, J H Miller, Royal Miller
Electrician—C W Beaton
Emergency Hospital—Tholow Binkley physician in charge
Engineer—A J Wagner
Filtration Works—R A Stephenson supt
Fire Department—M J Dunphy chief
Garbage Department—E N McManus supt
Harbormaster—G H Haddy
Health Department—W W Cress health officer
Humane Officer—H J Winters
Incinerator—F A Hobson supt
Landscape Architect—F N Evans
Machinist—J J Caffrey
Meat Milk Food and Market Inspector—C L Megowan
Municipal Club House—16th cor C
Municipal Free Employment Bureau—Mary Mills agent
Municipal General Clinic
Municipal Utility Dist—Albt Givan chf eng City Hall
Park Department—F N Evans supt
Physician—Tholow Binkley
Plumbing Inspector—E A Court
Police Court—F L Garney judge
Police Department—T N Koenig chief
Pound—J B Martin in charge
Prosecutor—F J Harris
Purchasing Agent—E J Plato
Recreation Department—Geo Sim supt
Sanitary Inspector—F P Jackson
Street Department—(City Engineer)
Superintendent of Schools—C C Hughes
Treasurer—F L Martin
Water Department—J I Prugh supt

FIRE DEPARTMENT

M J Dunphy chief engineer City Hall
Chemical Eng Co No 1—1017 5th

Chemical Eng Co No 2—1917 22d
Chemical Eng Co No 3—415 20th
Chemical Eng Co No 4—3720 Folsom blvd
Eng Co No 1—128 L
Eng Co No 2—1917 22d
Eng Co No 3—1215 19th
Eng Co No 4—1214 26th
Eng Co No 5—2014 9th
Eng Co No 6—3414 4th av
Eng Co No 7—2562 Portola way
Eng Co No 8—928 43d
Truck Co No 1—1117 6th
Truck Co No 2—1215 19th
Truck Co No 3—3414 4th av

POST OFFICE

H J McCurry Postmaster
Station 1—3875 J
Station 2—1825 Del Paso blvd No Sac
Station 3—703 19th
Station 4—1130 K
Station 5—2300 27th
Station 7—2700 24th
Station 8—2331 N
Station 9—1928 16th
Station 10—4758 J
Station 11—3826 Stockton blvd
Station 12—2431 J
Station 14—State Capitol
Station 17—1530 9th
Fort Sutter Station—2724 J
Oak Park Station—2950 35th
Terminal Station—S P Depot

BOARD OF EDUCATION

J E Lynn, president; Mrs Edith W Cohn, J B Chiffen, Mrs Alice W Lorenz, A M Henderson

Public Schools

Bret Harte—Franklin blvd cor 7th av, Mrs Louise Gavigan prin
Coloma—1840 47th, Lillie L Laugenour prin
David Lubin—37th and K, H F Clarke prin
Donner—Stkn blvd and 8th av, Mrs E S Johnson prin
El Dorado—53d and J, Agnes F Burns prin
Elementary Evening School—18th and K
Evening High—18th and K, Frank Tade prin
Fremont—24th and N, Henriette L Huntington prin
Harkness Night High—10th and P, Anthony G Zallio prin
Jefferson—16th and M, Mrs I M C Smith prin

John Muir—Riverside blvd, Ella G McCleery prin
 Leland Stanford—38th and 4th av, Julia A Donovan prin
 Lincoln—4th and Q, Nettie M Hopley prin
 Marshall—27th and G, Emma A Von Hatten prin
 McKinley—7th and G, Minnie Roth prin
 Newton Booth—27th and V, Molly L Brown prin
 Part Time High—13th and G, J E Carpenter prin
 Sacramento High—34th and W, John F Dale prin
 Sacramento Junior College—Freeport blvd and 13th av J B Lillard pres
 School for Deaf—25th and N, Mrs Kath West prin
 Sierra—24th and 3d av, Mrs Alta Rowe prin
 Stanford Junior High—38th and 4th av, Beth Hughson prin
 Sutter Junior High 18th and K, Byron W Painter prin
 Washington—17th and E, Mary L Woods prin
 William Land—11th and U, Jos W Johnson prin

County

American River—1620 Meister
 Sutterville Heights—Sutterville rd
 Washington—C bet 3d and 4th Brodk
 West Acres—West Sac

CITY GOVERNMENT—BRODERICK

Town Hall—3d ne cor C

Fire Commissioners—J S Lear, P E McGregor, S T Rickard—Meets Town Hall Brodk
 Health Officer—Henry Leinberger jr
 Justice Court—D B Barry judge, F R Wilson Constable—Town Hall
 School Commissioners—P E McGregor, Mrs M L Manchester, Mrs Irma Dasonville—Meets Washington School

COUNTY GOVERNMENT

Court House I bet 6th and 7th

Assessor—B C Erwin
 Auditor—L P Williams
 Board of Education—(Sac) Mrs H B Bradford pres R E Golway sec Mrs F P Osborn (Elk Grove) Julia A Donovan (Sac) Martha J Ferguson (Folsom)
 Board of Supervisors—H K Johnson Dist 3 chairman, C S Alvord Dist 1, R E Callahan Dist 2, J A Russi (Folsom) Dist 4, Perley Bradford (Galt) dist 5
 Clerk—H W Hall
 Constable—E G Cheney
 Constable—T B Hagerty
 Coroner—J R Garlick
 Department of Charities—Mary J Judge registrar
 Detention Home—Mrs Cecelia Loftus matron, Stkn bld nr V
 Dispensary—C H McDonald in charge
 District Attorney—N R McAllister
 Engineer—C W Deterding jr
 Farm Advisor—L Y Leonard
 Farm Bureau—Edith M Hefflin secretary
 Free Optical Clinic—G F Beard in charge
 Garage—J H Schacht manager, 1414 E
 Home Demonstration Agent—Christine G Morrison

Horticultural Commissioner—A E Morrison
 Hospital—Stockton blvd nr V
 Humane Officer—H J Winters
 Justices of the Peace—H P Andrews, F J O'Brien, Silas Orr and Edwin McEwan
 Juvenile Court—P J Shields judge
 Law Library—M W Stewart librarian
 Live Stock Inspector—Edw Tow, 1015 17th
 Probation Officer—C E Wilson
 Public Administrator—Donald McDougall
 Purchasing Agent—Geo Vice
 Recorder—C A Root
 Registrar of Voters—H W Hall
 Sealer of Weights and Measures—Jas Duffee
 Sheriff—E W Jones
 Superintendent of Schools—R E Golway
 Superior Court Judges—J R Hughes Dept 1, P J Shields Dept 2, M C Glenn Dept 3, J F Pullen Dept 4
 Surveyor—D D Butler
 Tax and License Collector—Ed T Ryan
 Treasurer—F P Christophel

STATE OFFICES

(All offices State Capitol unless otherwise noted)

State Capitol Extension Buildings—10th and L
 Governor—C C Young
 Adjutant General R E Mittlestaedt, 1909 Forum bldg
 Attorney General—U S Webb (S F)
 Controller—Ray L Riley
 Secretary of State—F C Jordan
 Treasurer—C G Johnson
 California Highway Commission (hdqtrs)—R M Morton chief eng, 5 Strub bldg
 District Court of Appeal (Third Appellate Dist)—Wm M Finch Presiding Justice, E C Hart and J A Plummer Associates, John T Stafford clerk
 Arsenal—John L Henderson military storekeeper, 12th cor W
 Athletic Commission of Calif—Louis Algren, San Diego
 Board of Agriculture—C W Paine sec, Fair Grounds
 Board of Chiropractor Examiners—Jas Compton secretary, 817 Forum bldg
 Board of Control—A R Heron chairman, J P Baumgarten member, H E Smith secretary
 Board of Education—54 Mull bldg
 Board of Education (Teachers Retirement Department)—Marion H Ketcham assistant secretary, 714 Forum bldg
 Board of Equalization—Dixwell L Pierce secretary
 Board of Forestry—M B Pratt secretary, 714 Forum bldg
 Board of Health—Dr W M Dickie (Berkeley) secretary, 727 Forum bldg
 Board of Health (Bureau of Tuberculosis)—Mrs E L M Tate Thompson director, 717 Forum bldg
 Board of Health (Bureau of Vital Statistics)—L E Ross director, 723 Forum bldg
 Board of Medical Examiners—C B Pinkham (S F) secretary, 908 Forum bldg
 Board of Osteopath Examiners—L R Daniels secretary, 320 Forum bldg

- Bureau of Identification—C S Morrill superintendent, Strub bldg
 Bureau of Labor Statistics—F H White dep comr, 308 Forum bldg
 Commission Immigration and Housing—F J De Andreis director, 213 Cal Fruit bldg
 Compensation Insurance Fund—R E Hoppe res spl agt, 913 Forum bldg
 Corporation Dept—J M Friedlander commissioner 1001 Cal Fruit bldg
 Corporation License Tax Dept—E W Gardiner supt
 Dept of Agriculture—G H Hecke director, 1015 L
 Dept of Civil Service—Lodema Shurtleff sec, 331 Forum bldg
 Dept of Institutions—Vacancy, 827 Forum bldg
 Dept Public Works—Paul Bailey director, 525 Forum bldg
 Division of Architecture Dept of Public Works—G B McDougall chf, 615 Forum bldg
 Division of Engineering and Irrigation—Paul Bailey chf, 627 Forum bldg
 Division of Motor Vehicles—Frank S. Snook chief, Strub bldg
 Division of Printing—Vacancy
 Division of Water Rights (Dept Public Works)—Edw Hyatt jr chf, 707 Forum bldg
 Engineer—Paul Bailey, 627 Forum bldg
 Fish and Game Commission—I Zellerbach (S F) pres, 815 Forum bldg
 Forester—M B Platt, 711 Forum bldg
 Insectary—13th and L
 Legislative Counsel Bureau—Frederick B Wood counsel
 Library—M J Ferguson libr
 Mining Bureau—C A Logan dist mining engineer, 917 7th
 Purchasing Dept—W G McMillin purch agt
 Real Estate Dept—Stephen Barnson commissioner, 79 Mull bldg
 Reclamation Board—A M Barton chf eng, 835 Forum bldg
 Supreme Court—W H Waste (S F) chf justice
 Supt of Banks—W C Wood
 Supt of Capitol Building and Grounds—F N Killam supt
 Supt of Public Instruction—51 Mull bldg
 Surveyor General—W S Kingsbury
 Veterans Welfare Board—G M Stout sec, 204 Plaza bldg
 Superior Court Judges—M C Glenn Dept 1, P J Shields Dept 2, J R Hughes Dept 3, J F Pullen Dept 4, Court House
- STATE ASSEMBLY COMMITTEES**
Speaker of Assembly—E C Levey (San Francisco)
 (Committees with name of chairman following)
 Agriculture—Wm P Jost (Hayward)
 Attaches—C F Reindollar (San Rafael)
 Banking—Ray Williams (San Francisco)
 Building and Loan Associations—F M Roberts (Los Angeles)
 Civil Service—J C Crawford (Los Angeles)
 Claims—Dan Williams (Chinese Camp)
 Commerce and Navigation—J V Scofield (Los Angeles)
 Conservation—F B Noyes (Yuba City)
 Constitutional Amendments—R J Anderson (Redding)
 Contested Elections—Roy Bishop (Alameda)
 Contingent Expenses—C B Melville (Fort Bragg)
 Corporations—Vernon Gant (Modesto)
 County Government—G W Rochester (Los Angeles)
 Direct Legislation—H L Parkman (San Mateo)
 Drainage Swamp and Overflow—R P Easley (Antioch)
 Education—Wm Byrne (Los Angeles)
 Elections—E G Adams (Livingston)
 Engrossment and Enrollment—Mrs Cora Woodbridge (Roseville)
 Federal Relations—M D Witter (Brawley)
 Fish and Game—C A Oliva (San Francisco)
 Governmental Efficiency and Economy—R J Feigenbaum (San Francisco)
 Governmental Revenues and Expenditures—Van Bernard (Butte City)
 Hospitals and Asylums—Harry Morrison (San Francisco)
 Insurance—Eugene Roland (Oakland)
 Introduction of Bills—A S Jewett (Hanford)
 Irrigation—F W Mixter (Exeter)
 Judiciary—Lelan Jacobson (San Francisco)
 Labor and Capital—M J McDonough (Oakland)
 Libraries—C C Spaulding (Sunnyside)
 Livestock and Dairying—R F Fisher (Carlotta)
 Manufacturers—J F Burns (San Francisco)
 Medical and Dental Laws—T J Lenehan (San Francisco)
 Mileage—J C Flynn (San Francisco)
 Military Affairs—R L Patterson (Taft)
 Mines and Mining—H C Cloudman (Berkeley)
 Motor Vehicles—Roy Neilsen (Sacramento)
 Municipal Corporations—Clare Woolwine (Los Angeles)
 Oil Industries—C A Foster (Fowler)
 Prisons and Reformatories—H C Kelsey (Oakland)
 Public Charities and Corrections—Finley
 Public Health and Quarantine—R B Fry (San Francisco)
 Public Morals—D P Anderson (Santa Rosa)
 Public Utilities—J A Miller (San Francisco)
 Revenue and Taxation—P G West (Sacramento)
 Revision and Printing—W H Duval (Santa Paula)
 Revision of Criminal Procedure—Wm Hornblower (San Francisco)
 Roads and Highways—F K Hawes (San Francisco)
 Rules—Isaac Jones (Ontario)
 Soldiers and Sailors Affairs—Morgan Keaton (Long Beach)
 State Grounds and Parks—Byron Walters (San Diego)
 Teachers Colleges—B N Snyder (Santa Cruz)

Universities—Jake Croter (Oakland)
Ways and Means—T M Wright (San Jose)

FEDERAL OFFICES

U S Army Organized Reserves—J L Tupper capt in charge
U S Attorney—A E Sheets asst, 313 Federal bldg
U S Bureau of Animal Industry—Rudolph Snyder in charge, 211 Federal bldg
U S Department of Agriculture—(Bureau of Entomology) C C Wilson in charge, 600 26th
U S Department of Agriculture—(Bureau of Plant Industry) M N Wood C F Kinman in chg 924 11th
District Court (No Div)—F M Lampert clerk, 307 Federal bldg
U S Engineers Office—H M Rich engineer in charge, 507 Plaza bldg
U S Geological Survey—T G Gerdine engineer in charge, 302 Federal bldg
U S Indian Agency—L A Dorrington superintendent, 308 Cal Fruit bldg
U S Internal Revenue—Thos Ahern dep collr, 208 Federal bldg
U S Land Office—J C Ing register, 209 Federal bldg
U S Marine Corps Recruiting Station—501½ K
U S Marshall—W M Ahern deputy in charge, Federal bldg
U S Postmaster—H J McCurry, K cor 7th
U S Post Office Inspector—T W Naylor, 215 Federal bldg
U S Prohibition Agent—A E McCoy, 206 Federal bldg
U S Referee in Bankruptcy—E J Hughes, 614 Capital Bank bldg
U S Veterans Bureau—607 Nicolaus bldg
U S Weather Bureau—N R Taylor meteorologist, 306 Federal bldg

CHURCHES

Adventists

Seventh Day—1017 23d, Rev J G White pastor, h1642 38th

Baptist

Calvary—I cor 16th, Rev A W Brown pastor, h4065 2d av
Chinese Mission—525 M
First—1216 9th, Rev Bryant Wilson pastor, h2939 27th
Japanese—1526 5th, Rev K Hijikata pastor, h1526 5th
New Hope—20th cor Burnett way, Rev W H Hughes pastor, h3519 1st av
Oak Park—4th av cor 33d, Rev Ben Rowland pastor, h3114 5th av
Shiloh Baptist Church—6th cor P

Buddhist

Buddhist—418 O, Rev J Imanishi pastor, h418 O

Christian

Curtis Oaks Christian Church—2961 24th First—26th cor N, Rev L G Leavitt pastor, h1328 27th

Christian Science

First Church of Christ Scientist—1114 21st
Second Church of Christ Scientist—33d cor 3d av
Third Church of Christ Scientist—J cor 12th

Congregational

Chinese Mission—622 I
First—L cor 27th, Rev H H Gill pastor, h1045 35th

Episcopal

St Paul's—J cor 15th, Rev W H Hermitage pastor, h2915 25th
Trinity—Pro-Cathedral, 2610 M, Rev E S Bartlam vicar, h2535 Montgomery way

Evangelical

First—2954 24th, Rev Walter Herrscher pastor, h2954 24th
Scandinavian Mission—2301 K, Rev C A Nelson pastor, h1401 36th
Los Angeles—Cor Willow, Rev A H Whitaker pastor, h2860 33d

Hebrew

Mosaic Law—1418 8th, Rev Ephraim Brosin, h1412 9th
Temple B'nai Israel—1421 15th, Rabbi H F Reinhart pastor, h5, 1500 15th

Latter Day Saints

Church of Jesus Christ—2812 34th
Reorganized Church of Jesus Christ of Latter Day Saints—K cor 24th, Rev Geo Daley pastor, h2818 E

Lutheran

Ebenezer Evangelical—1516 10th, Rev A L Horn pastor, 1518 10th
First English—39th cor 4th av, Rev W L Rutherford pastor, h2215 21st
St John's—L ne cor 17th, Rev C F Oehler pastor, h1709 L
St Luke's English—31st cor 1st av, Rev Erwin Duerchner pastor, h2989 43d
Trinity—800 28th, Rev C C Fickenscher pastor, h808 28th
Zion—1330 25th, Rev C G Anderson pastor, h1320 25th

Methodist

Chinese Mission—915 5th Church 1415 6th
Elmhurst—1827 51st
First—J cor 21st, Rev J F Wilson pastor, h1642 38th
Free—1514 14th, Rev E G Kerby pastor, h1512 14th
Grace—Rev J H Wilson pastor, 815 11th
Independent Japanese Mission—1315 5th
Japanese—331 O, Rev Watanabe pastor, h327 O
Kyles Temple A M E Zion—4th av cor 36th, Rev E J Magruder pastor, h3985 3d av
Mexican—1116 6th
Oak Park—3d av cor 34th, Rev C H Bennetts pastor, h2814 34th
St Andrew's African—715 7th
Wesley—5012 15th av, Rev C W B Ellis pastor, h5010 15th av

Methodist—South

First South—15th cor J, Rev Harold Gavotti pastor, h1427 G

Nazarene

Church of the Nazarene—28th cor S, Rev E E Mieras pastor, h2905 La Solidad way
Church of the Nazarene—120 E El Camino No Sac, Rev E R Quick pastor, h Rio Linda

Presbyterian

Bethany—30th cor 2d av, Rev W K Howe pastor, h3009 3d av
Calvary—Fillmore cor Jackson, Rev Ezra A Van Nuy pastor
Fremont—J cor 36th, Rev R B McAulay pastor, h1037 Dolores way

Westminster—K cor 13th, Rev S L Di-vine pastor, h2025 22d

Roman Catholic

Cathedral of the Blessed Sacrament—11th cor K, Rt Rev P J Keane Bishop of Diocese, Rev T E Horgan rector, h 1017 11th

Church of Our Lady of the Blessed Sacrament—313 E Brodtk

Church of the Immaculate Conception—Sacto blvd cor 1st av, Rev J H Ellis pastor, h2549 32d

Greek Orthodox—620 N, Rev A Georgakopoulos pastor, h1806 O

St Elizabeth (Portuguese)—12th cor S Rev J V Azevedo pastor, h1921 12th

St Francis—26th cor K, Rev Solanus Crowley pastor, h1112 26th

St Mary's (Italian)—1915 7th, Rev Dominick Taverna pastor, h711 T

St Stephen's—305 O

Salvation Army

Salvation Army The (Divisional Headquarters No Cal and Nevada)—Brig J W Hay div commander, 912 8th

Corps No 1, Capt Bert Phillips in charge 912 8th, Outpost, 1120 5th

Salvation Army The (Men's Social Service Dept, Industrial Store, Hotel and Prison Work)—Brig John Bree dist officer, 508 L Hotel and Employment Dept, 914 2d Enterprise Annex, 115 K Salvation Army (Japanese Corps)—1314 6th, M Gamada in charge

Unitarian

First—1415 27th, Rev B B Blake pastor, h1401 Dolores way

United Brethren

First—I cor 19th, Rev V W Overton pastor, h911 19th

Miscellaneous Churches

American Center Church—1116 6th

Church of God—3465 5th av

Full Gospel Tabernacle—1119 21st, Rev P H Ralston pastor, h1121 21st

Glad Tidings Mission—Rev Frank Smith, 3420 2d

Gospel Hall—4112 4th av

Grace and Truth Gospel Hall—4112 4th av

Japanese Church of Christ—500 M, Rev Koziro Kahita pastor, h502 M

Light House Temple Gospel—1220½ J

Oak Park Full Gospel Church—3524 2d av

Peniel Mission—325 K

Swedish Mission—2301 K

Unity Center of Divine Science—309 Plaza bldg

Volunteers of America—525 L

LABOR ORGANIZATIONS

Allied Printing Trades Council—Meets 4th Sunday, Labor Temple

American Railway Express Clerks—Meets 1st and 3d Tuesday, 831 I

Asbestos Workers No 71—Meets 1st and 3d Tuesday, Labor Temple

Bakers-Confectionery Workers—Meets 1st and 3d Saturday, Labor Temple

Barbers No 112—Meets 4th Thursday, Labor Temple

Blacksmiths No 174—Meets 2d and 4th Thursday, Labor Temple

Boilermakers No 743—H R Thring sec, meets 1st and 3d Thursday, Labor Temple

Bookbinders No 35—R L Ennis sec, meets 2d Thursday, Labor Temple

Brewery Drivers No 227, Branch 4—Meets 2d Thursday, Labor Temple

Brewery Workers No 227, Branch 6—Meets 4th Saturday, Labor Temple

Bricklayers No 9—Meets 4th Saturday, Labor Temple

Brotherhood R R Carmen No 632—Meets 2d and 4th Wednesday, Labor Temple

Brotherhood R R Carmen No 1344—Meets 1st and 3d Thursday, Labor Temple

Building Trades Council—W J Leflar bus agt, meets every Thursday, Labor Temple

Butchers Assn—Meets 2d and 4th Mondays, 831 I

Butchers Union No 498—Meets 1st and 3d Tuesday, Labor Temple

Carpenters No 586—Meets every Friday, Labor Temple

Carpenters N 2170—Meets every Wednesday, Labor Temple

Carpet Mechanics—Meets 2d Monday, Labor Temple

Cement Finishers—Meets 2d Tuesday, Labor Temple

Cement Workers—Meets 2d and 4th Tuesday, Labor Temple

Cigar Makers No 238—Abe Silverstone sec, meets 2d Tuesday, Labor Temple

Cooks and Waiters No 561—G T Peterson sec, meets every Wednesday, 1301½ J

Dredgemen (Engineers) No 914—H G Charles sec, meets 1st and 3d Sunday, 429 J

Electrical Workers No 36—Meets 1st and 3d Thursday, Labor Temple

Electrical Workers No 340—Meets every Monday, Labor Temple

Engineers Union—R L Hatfield bus agt, Labor Temple

Federated Trades Council—Meets every Tuesday, Labor Temple

Glaziers No 767—Meets 1st and 3d Tuesday, Labor Temple

Hod Carriers No 262—Meets 1st and 3d Tuesday, Labor Temple

Hoisting Engineers No 857—Meets every Monday, Labor Temple

Hotel Maids No 616—Laura Mitchell sec, meets last Thursday

House Movers—Meets 2d and 4th Friday, Labor Temple

Icemen No 230—Meets 2d and 4th Wednesday, Labor Temple

Iron Workers and Riggers Union—Jas Sullivan sec, 429 J

Label League—Frank Dix sec, meets 1st and 3d Tuesday, Labor Temple

Laborers No 343—Meets 1st and 3d Wednesday, Labor Temple

Lathers No 109—Meets 1st and 3d Monday, Labor Temple

Laundry Workers No 75—Meets 2d and 4th Wednesday, Labor Temple

Letter Carriers—Tom White pres

Machinists Lodge No 33—Meets 2d and 4th Thursday, Labor Temple

Material Teamsters No 803—Meets 1st and 3d Wednesday, Labor Temple

Milk Wagon Drivers No 573—Geo Stokel sec, meets 1st and 3d Monday, Labor Temple

Millmen No 1618—Meets 1st and 3d Friday, Labor Temple

Molders No 199—Meets 3d Tuesday, Labor Temple
 Motion Picture Operators No 252—Meets 1st Tuesday, Labor Temple
 Musicians No 12—Wilkie Ogg sec, meets 1st Sunday, Labor Temple
 Painters and Decorators No 487—Meets every Monday, Labor Temple
 Piano Workers No 20—Meets 1st and 3d Friday, Labor Temple
 Plasterers No 285—Meets 1st and 3d Monday, Labor Temple
 Plumbers-Steamfitters No 447—Meets 2d and 4th Friday, Labor Temple
 P O Clerks—J C Perry pres
 Printing Pressmen No 60—Meets 3d Wednesday, Labor Temple
 Railway Clerks—Meets 2d and 4th Friday
 Roofers No 47—Meets 1st and 3d Monday, Labor Temple
 Sacramento County Building Trades Council—M F Connors sec, meets every Thursday, Labor Temple
 Sheet Metal Workers No 601—Meets 4th Friday, Labor Temple
 Shop Federation No 4—Meets 1st and 3d Monday, Labor Temple
 Sign Writers No 868—Meets 2d and 4th Monday, Labor Temple
 Stage Hands No 50—Meets every Wednesday, Labor Temple
 Stationary Engineers No 210—Meets every Friday, Labor Temple
 Stereotypers and Electrotypers No 86—Meets 1st Monday, Labor Temple
 Street R R Carmen No 256—H L Mott sec, meets 2d and 4th Wednesday, Labor Temple
 Tailors No 107—Meets 1st Tuesday, Labor Temple
 Teachers No 31—Elsie Meeks sec, meets last Friday
 Teachers No 94—Cecelia Dahringer sec, meets last Friday
 Technical Engineers No 47—Meets every Wednesday, Labor Temple
 Truck Drivers No 557—Meets 1st Thursday, Labor Temple
 Typographical No 46—Meets last Sunday, Labor Temple
 Upholsterers No 64—C S Van Roy sec, meets 2d and 4th Friday, Labor Temple

MISCELLANEOUS ORGANIZATIONS

Ad Club—Harry Leonard sec, Hotel Senator
 Alturians—Ellis Purlee sec, Hotel Sacramento
 American Turnbund—3337 J
 Builders Institute of Sacramento—A W Palm sec, 1508 J
 Building Material Exhibit—910 9th
 Business Womens Club—Eliz K Pierce sec, St Francis Hotel
 California Development Assn—Wm Boucher dist mgr, 917 8th
 Camp Fire Girls—Mrs G P May exec sec, 1218 17th
 Capital City Motorcycle Club—Meets every Tuesday night, 429 J
 Catholic Ladies Relief—Meets 1st and 3d Monday p m, 824 J
 Chamber of Commerce—A S Dudley sec, 917-921 7th
 Church Federation of Sacramento—Mrs M L Harbaugh sec, Y M C A

Civitan Club—Ed Rader sec, Hotel Senator
 Crocker Art Gallery—O cor 2d, W F Jackson curator
 Dante Club—1511 P
 Electrical Contractors and Dealers Association—R J Finckley pres, 910 9th
 Elks Club—S W Leitch sec, J cor 11th
 Exchange Club—C LeMaster sec, Hotel Senator
 Good Government League—Meet 2d and 4th Thursday, 831 I
 International Bible Students Assn—831 I
 Italian American Social Club—1017½ J
 Japanese Association of Sacramento Valley—300½ M, T Karakawa sec
 Jobbers and Manufacturers Association—G J Bradley mgr, 401 Cal Fruit bldg
 Kiwanis Club—Rev Bryant Wilson sec, Hotel Sacramento
 Lions Club—B F Babcock sec, meets at Hotel Sacramento every Thursday
 Literary Club—Meets 712 I
 Master Builders Assn—L S Patterson sec, 709 Plaza bldg
 Master Painters Assn—W L Tripplett sec, meet 1st and 3d Thursday, 1508 J
 Master Plumbers Assn—W W Mott sec, 910 9th
 Material Dealers Credit Association—S E Mack sec, 707 Plaza bldg
 Merchants & Manufacturers Traffic Association—G J Bradley mgr, 401 Cal Fruit bldg
 Native Sons of the Golden West Club—924 11th
 Odd Fellows Club—G D Irvine sec, 20 I O O F Temple
 Optimist Club—Geo Berger sec, Hotel Senator
 Rotary Club—J W Morsehead sec, Hotel Senator
 Round Table—J V Root sec, Hotel Sacramento
 Sacramento Baseball Club—C F Doyle sec, 502 Ochsner bldg
 Sacramento Board of Trade—V L Hatfield sec, 405 Ochsner bldg
 Sacramento Real Estate Board—A J Delano sec, Hotel Senator
 Sacramento Turn Verein—Meets 1st and 3d Wednesday, 3349 J
 Sacramento Valley Electrical Society—W L Hill sec, 1100 K
 Sacramento Valley Regional Advisory Council—Wm Boucher sec, 917 8th
 Sacramento Tuberculosis Association—Mrs E S Edson sec, 918½ 6th
 St Barnabas Community House—2029 8th
 Shop Crafts Protective League—Meets 2d and 3d Friday 824 J
 Sutter Club—C H Ludden acting sec, 327 J
 Sutter Lawn Tennis Club—3951 N
 Tuesday Club—2722 L
 Young Men's Christian Assn—H P Dermand gen sec, J cor 5th
 Young Women's Christian Assn—Neva A Chappell exec sec, 1517 M
 Women's Home Companion Reading Club—332 Ochsner bldg

SOCIETIES—SECRET AND FRATERNAL

Masonic

Masonic Board of Relief—Meets 1st Sunday, Masonic Temple

Masonic Temple Association—Meets 2d Monday, Masonic Temple

Tehama Lodge No 3 F & A M—Meets 1st Monday, Masonic Temple

Washington Lodge No 20 F & A M—Meets 1st Thursday, Masonic Temple

Sacramento Lodge No 40 F & A M—Meets 1st Friday, Masonic Temple

Union Lodge No 58 F & A M—Meets 1st Wednesday, Masonic Temple

Concord Lodge No 117 F & A M—Meets 1st Tuesday, Masonic Temple

Provident Lodge No 609—Meets 1st Monday, Masonic Temple

Three Pillars Lodge No 613—Meets 2d Friday, Masonic Temple

Masters & Wardens Association—Meets 1st Sunday, Masonic Temple

Isaac Davis Lodge of Perfection—F L Milne sec, meets 3d Tuesday, Scottish Rite Temple

Sacramento Comdry No 2 K T—Meets 1st Thursday, Masonic Temple

Sacramento Consistory—F L Milne sec, meets 1st Tuesday, 2730 L

Sacramento Council No 1 R & S M—Meets last Monday, Masonic Temple

Sacramento Chapter Knights Kadosh—F L Milne sec, meets 1st Tuesday, 2730 L

Sacramento Chapter Knights Rose Croix—F L Milne sec, meets 1st Tuesday, 2730 L

Jewel Court No 20 O of A—Meets 1st and 3d Tuesdays, Masonic Temple

Ben Ali Temple—Wm Bowden recorder, office Hotel Sacramento

Naomi Chapter No 36 O E S—Meets 2d and 4th Wednesdays, Masonic Temple

Columbus Chapter No 117 O E S—Meets 2d and 4th Monday, Masonic Temple

Sacramento Chapter No 190 O E S—Meets 1st and 3d Friday, Masonic Temple

Ada Chapter No 301 O E S—Meets 1st and 9d Thursday, Masonic Temple

Fort Sutter Chapter No 420 O E S—Meets 2d and 4th Tuesday, Masonic Temple

El Camino Chapter No 428 O E S—Meets 1st Monday, Masonic Temple

Menzaleh Temple D of N No 16—Meets 1st and 3d Monday, Masonic Temple

Job Daughters—Meets 2d and 4th Saturday, Masonic Temple

White Shrine of Jerusalem No 11—Meets 1st and 3d Wednesday, Masonic Temple

Sacramento Chapter Order of De Molay—W R Triplett scribe, meets 1st and 3d Friday, 2730 L

Sacramento Pyramid No 3 Sciots—Meets 2d and 4th Saturdays, Masonic Temple

Independent Order of Odd Fellows

Sacramento Lodge No 2—Meets every Saturday, I O O F Temple

Eureka Lodge No 4—Meets every Wednesday, I O O F Temple

Oak Park Lodge No 5—Meets every Wednesday, I O O F Temple

El Dorado Lodge No 8—Meets every Monday, I O O F Temple

Capitol Lodge No 87—Meets every Friday, I O O F Temple

Schiller Lodge No 105—Meets every Thursday, I O O F Temple

Industrial Lodge No 157—Meets every Saturday, I O O F Temple

Canton Sacramento No 1—Meets 1st Thursday, I O O F Temple

Secret Encampment No 2—Meets 1st and 3d Tuesday, I O O F Temple

Occidental Encampment No 42—Meets 2d and 4th Tuesday, I O O F Temple

Veteran Odd Fellows Association—Meets 5th Tuesday, I O O F Temple

General Relief Committee—Meets 2d and 4th Thursday, I O O F Temple

Rising Star Rebekah Lodge No 8—Meets 1st and 3d Thursday, I O O F Temple

Camelia City Rebekah Lodge No 31—Meets 1st and 3d Tuesday, I O O F Temple

Capitol City Rebekah Lodge No 160—Meets 2d and 4th Thursday, I O O F Temple

Sacramento Rebekah Lodge No 232—Meets 2d and 4th Tuesday, I O O F Temple

Sacramento Rebekah General Relief—Meets 1st and 3d Friday, I O O F Temple

Benevolent and Protective Order of Elks

B P O Elks No 6—S W Leitch sec, meets Tuesday of each week, J cor 11th

Foresters of America

Court Capitol No 6—Meets Mondays 716 I

Court Sacramento No 12—Meets 1st and 3d Tuesday 716 I

Court Concordia No 119—Meets 2d and 4th Friday, 716 I

Court Concordia Circle No 514—716 I

Camelia City Circle No 1002—Meets 1st and 3d Wednesday, 716 I

Companions of the Forest of America

Companions of Forest—Meets 1st and 3d Friday, I O O F Temple

Improved Order of Red Men

Cosumnes Tribe No 14—Meets every Thursday, 21st and L

Red Jacket Tribe No 28—Meets every Friday, 21st and L

Wenonah Council No 2 (Pocahontas)—Meets every Monday, 21st and L

Onondaga Council No 84 (Pocahontas)—Meets every Tuesday, 21st and L

Metamora Council No 31 (Pocahontas)—Meets every Wednesday, 21st and L

Fraternal Brotherhood

Brotherhood—Meets every Monday, 2950 35th

Fraternal Order of Eagles

E E Hite sec, 330 Ochsner bldg

Sacramento Aerie No 9—Meets every Wednesday, 902 J

Order of Eagles No 1714—Meets every Tuesday, 2950 35th

Junior Order United American Mechanics

General J A Sutter Council No 25—Meets Thursdays, I O O F Temple

Knights of Columbus

Council 953—Meets 2d and 4th Thursday, 824 J

Fourth Degree—Meets 1st Thursday, 824 J

Knights of Pythias

Confidence Lodge—Meets 2d and 4th Monday, 831 I

Sacramento Lodge—Meets 1st and 3d Monday, 831 I

Pythian Sisters—Meets 2d and 4th Friday, 831 I

Maccabees

District Office—S C Ayres dist mgr 209 Ochsner bldg
Columbia Tent No 23—Meets Tuesday, I O O F Temple

Modern Woodmen of America

Capitol Camp No 8056 M W A—Meets every Wednesday, I O O F Temple

Royal Neighbors of America

(Auxiliary to the Modern Woodmen of the World)

Capitol Camp No 2328—Meets 2d and 4th Monday, I O O F Temple

Native Sons of the Golden West

Sacramento Parlor No 3—Meets each Thursday, 924 11th

Sutter Parlor No 11—Meets 1st and 3d Tuesday, 924 11th

Califia Parlor No 22—Meets 2d and 4th Friday, 924 11th

Sunset Parlor No 26—Meets each Monday, 924 11th

David Lubin Lodge No 37—Meets 2d and 4th Tuesday, 924 11th

La Bandera Parlor No 110—Meets 1st and 3d Friday, 924 11th

Sutter Fort Parlor No 241—Meets each Wednesday, 924 11th

Order of Hermann's Sons

Sons of Hermann—Meets 1st and 3d Monday, 831 I

Order of Moose

Loyal Order of Moose—Meets 712 I

Order of Owls

Sacramento Nest No 1141—Meets 2d Wednesday, 3333 I

Railroad Labor Organization

Brotherhood of Railway Conductors—Meets 1st and 3d Monday, I O O F Temple

Ladies Auxiliary B of L E—Meets 1st and 3d Wednesday, I O O F Temple

Southern Pacific Relief Assn—Meets 3d Saturday, 831 I

S P R S I Council No 12—Meets 3d Sunday, 831 I

U P S C Council No 11—Meets 2d and 4th Sunday, 831 I

United Ancient Order of Druids

Druids—Meets 2d and 4th Thursday, 824 J

United Commercial Travelers

Sacramento Council No 140—Meets 2d and 4th Saturday, 924 11th

United Order of Slavonians

United Order of Slavonians—Meets 4th Saturday, I O O F Temple

Woodmen of the World

Sequoia Camp No 104 W of W—Meets Wednesday, I O O F Temple

Woodmen of the World—F A Taylor clk, I O O F Temple

Neighbors of Woodcraft

Golden Circle No 62 Neighbors of Woodcraft—Meets 1st and 3d Monday, I O O F Temple

Young Ladies Institute

Young Ladies Institute No 17—Meets 2d and 4th Wednesday, 824 J

Young Men's Institute

Young Men's Institute No 14—Meets 1st and 3d Wednesday, 824 J

VETERAN ORGANIZATIONS AND THEIR ALLIED SOCIETIES**American Legion**

American Legion—E G Funke adjt, 718 I

Disabled American Veterans

Disabled American Veterans of World War Sacramento Chapter No 6—2317 11th

Grand Army of the Republic

Grand Army Sumner Post No 3—Meets 1st and 3d Thursday, Memorial Hall

United Spanish War Veterans

J Holland Laidler Camp No 5—Meets 1st and 3d Thursday, Memorial Hall

Veterans of Foreign Wars

Veterans of Foreign Wars (Lt Lansdale Post No 67)—3333 I

Miscellaneous

Auxiliary to Sons of Union Veterans—Meets 2d and 4th Thursday, Memorial Hall

Cynthia E Moore Auxiliary No 9 U S W V—Meets 1st and 3d Wednesday, Memorial Hall

Edward Roby Circle No 2 Ladies of the G A R—Meets 2d and 4th Friday, Memorial Hall

Ethel Lansdale Auxiliary Veterans of Foreign Wars—Meets 1st and 3d Monday, 3333 I

Fair Oaks Relief Corps No 13—Meets 2d and 4th Tuesday, Memorial Hall

Girls of '61 to '65—Meets 1st Saturday afternoon of each month, Memorial Hall

Mary Newcomb Tent Daughters of Union Veterans—Meets 1st and 3d Tuesday, Memorial Hall

Sons of Union Veterans—Meets 2d and 4th Tuesday, Memorial Hall

Sumner Relief Corps—Meets 2d Wednesday afternoon and 4th Wednesday evening, Memorial Hall

Veterans Affiliated Council—Meets 1st Friday, Memorial Hall

Daughters of America

The Daughters of America—Meets 2d and 4th Friday, I O O F Temple

Red Cross

American Red Cross (Sacramento City and County Chapter)—Health Center 900 8th

Boy Scouts of America

Boy Scouts of America (Sacramento Council)—O C Alverson scout exec, 201 Plaza bldg